

The Lakehouse Series

CONTEMPORARY WATERSIDE LIVING



LANSER *living*

01. THE LAKEHOUSE SERIES

Welcome to The Lakehouse Series in the coveted The Lakes precinct, where modern comfort meets the tranquillity of lakeside living in Virginia Grove. This exclusive selection of Torrens titled residences is the newest addition to the Lanser Living portfolio. Built in partnership with Weeks Homes, these homes promise a lifestyle of comfort, convenience, and natural beauty.

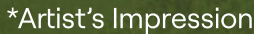
Experience the thoughtfully designed floorplan of The Lakehouse Series, tailored for your lifestyle. Revel in stunning lake views from the upstairs balcony in the versatile second living space. Spacious bedrooms provide a comfortable retreat for the family, and the walk-in pantry enhances kitchen functionality.



02. BETTER BY DESIGN

Modern specifications include premium stone kitchen benchtops and high-quality stainless-steel appliances. LED downlights and high ceilings create a bright, open atmosphere. Semi-frameless showers add luxury, and timber-style laminate floorboards blend elegance with durability. Choose from two stylish colour schemes.

Whether you're unwinding in your private alfresco area, taking a leisurely stroll along the lakefront, or enjoying quality time with family and friends, every moment promises to be a memorable one.



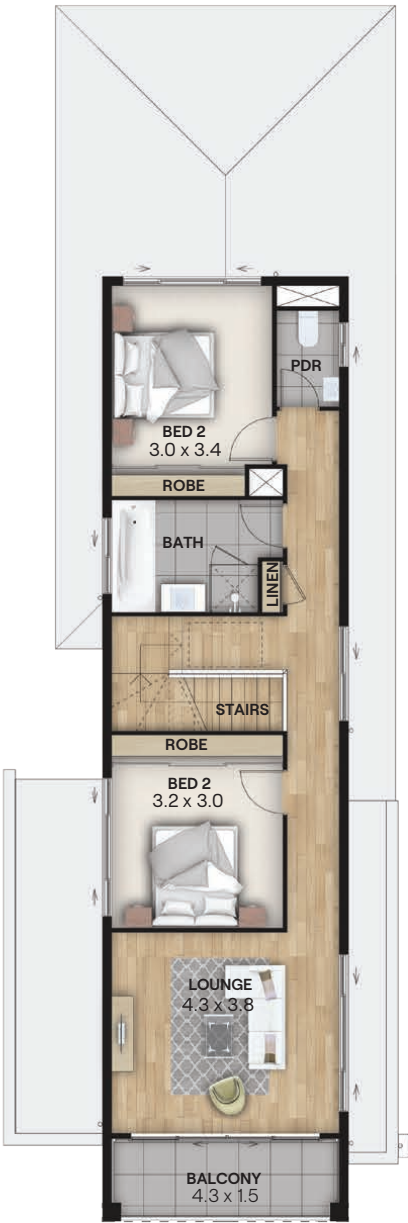
'To sit by a lake is to be at the very edge of the universe.' - Gertrude Jekyll

03.FLOOR PLAN



GROUND FLOOR

Living GF: 106m²
Living FF: 77.4m²
Balcony: 7.5m²
Porch: 2.9m²
Garage: 37m²
Total Area: 231m²



FIRST FLOOR



04 . ABOUT THE COMMUNITY: VIRGINIA GROVE

Enjoy lakeside luxury at the heart of Virginia...

The Lakehouse Series presents a beautifully designed collection of architectural townhomes, perfectly positioned along the tranquil shores of the brand-new Central Lake at Virginia Grove.

Set within the award-winning Virginia Grove community, **The Lakehouse Series** invites you to enjoy a lifestyle surrounded by landscaped parklands, fitness trails, play spaces, and local amenities — including an early learning centre, shops, and a welcoming neighbourhood of growing families.



Scan for more information.

